

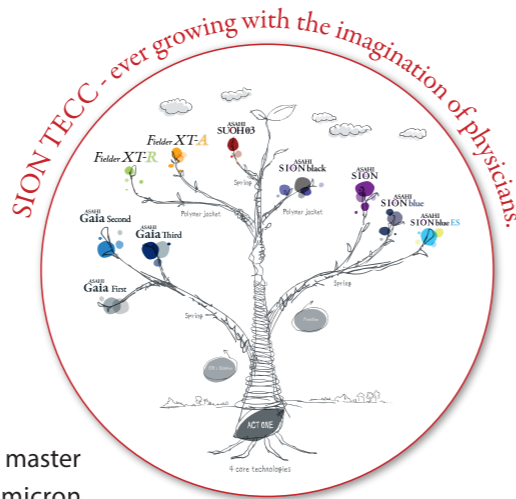
# ASAHI

*PTCA Guide Wire*

ASAHI's unique guide wire technology with Composite Core

**SION TECC**   
Leading to the NEXT

ASAHI's unique guide wire technology with Composite Core

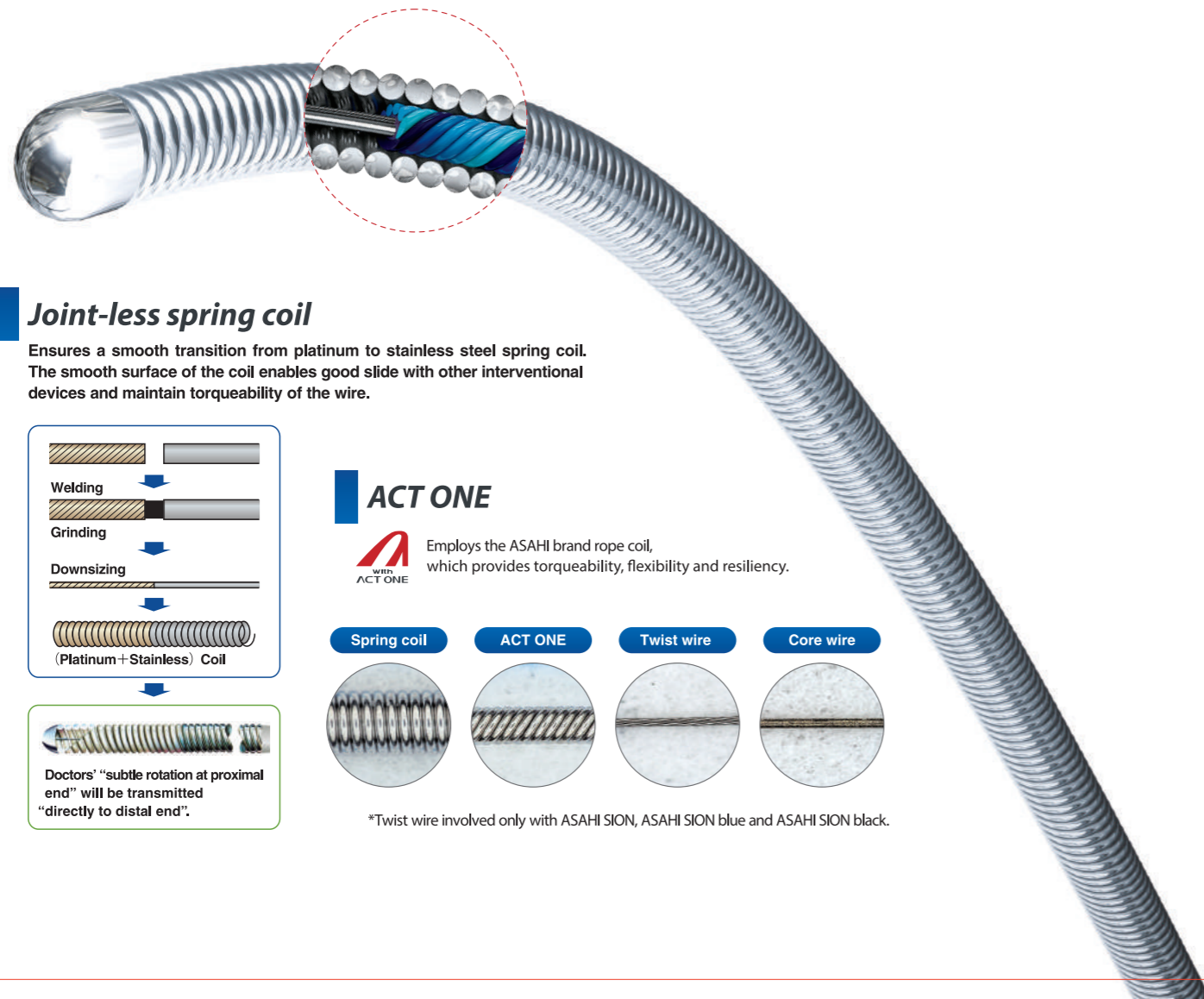


## “Small changes, great possibilities”

SION TECC is at the forefront of innovation.

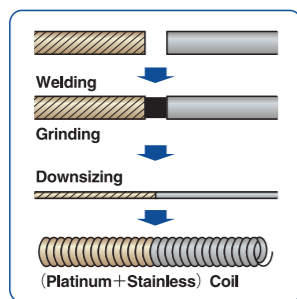
Listening to the needs of physicians and drawing on the skills of Japanese master craftsmen, we created ACT ONE : an ingenious enhancement of the 10 micron core wire that forms part of our guide wires' unique Composite Core design.

Technology that pushes back the boundaries of guide wire manipulation, enabling movement just as you imagine it.



### Joint-less spring coil

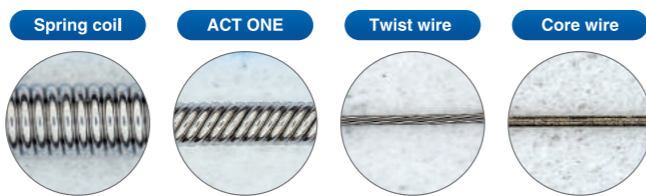
Ensures a smooth transition from platinum to stainless steel spring coil. The smooth surface of the coil enables good slide with other interventional devices and maintain torqueability of the wire.



Doctors' "subtle rotation at proximal end" will be transmitted "directly to distal end".

### ACT ONE

Employs the ASAHI brand rope coil, which provides torqueability, flexibility and resiliency.



\*Twist wire involved only with ASAHI SION, ASAHI SION blue and ASAHI SION black.

### Tip design

A variety of tip designs to facilitate branch selection or penetration ability. Asahi offers the right wire for any lesion.



### Coatings

A variety of coatings provide either superior lubricity, tactile feedback, or an optimal combination of the two.

• Choice of lubricity to suit the case at hand

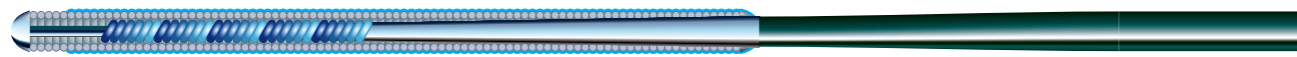
Lubricity	↑	Full silicone coating Grand Slam, ASAHI Miracle 12 / ASAHI MIRACLEBros 12
	↓	Hybrid coating [Silicone + Hydrophilic coating (SLIP-COAT®)] ASAHI SION blue, ASAHI SION blue ES
	↓	Hydrophilic coating with uncoated tip ULTIMATEBros 3, ASAHI Gaia series, ASAHI Conquest Pro / ASAHI Confianza Pro series
	↓	Full hydrophilic coating (SLIP-COAT®) ASAHI SION, ASAHI SUOH 03
	↓	Polymer jacket + Hydrophilic coating (SLIP-COAT®) Fielder XT-R, Fielder XT-A, ASAHI SION black

### One-piece core wire

One-piece core wire supports the entire guide wire from the proximal to the distal end. This design transmits the guide wire torque from one end to the other without loss.

## Frontline guide wires

### ASAHI SION blue



- Tip load ..... 0.5 gf
- Tip radiopacity ..... 3 cm
- SLIP-COAT® coating over the spring coil\*



First choice guide wire with proprietary Composite Core construction for greater tip flexibility and support performance. Easily-discernible shaft color for differentiation from other ASAHI wires. \*Silicone coating up to 15mm from the tip for safer procedures.

### ASAHI SION



- Tip load ..... 0.7 gf
- Tip radiopacity ..... 3 cm
- SLIP-COAT® coating over the spring coil



First choice guide wire with proprietary Composite Core construction for excellent tip durability and torque performance in tight anatomy. Flexible shaft and atraumatic tip for stress-free operation.

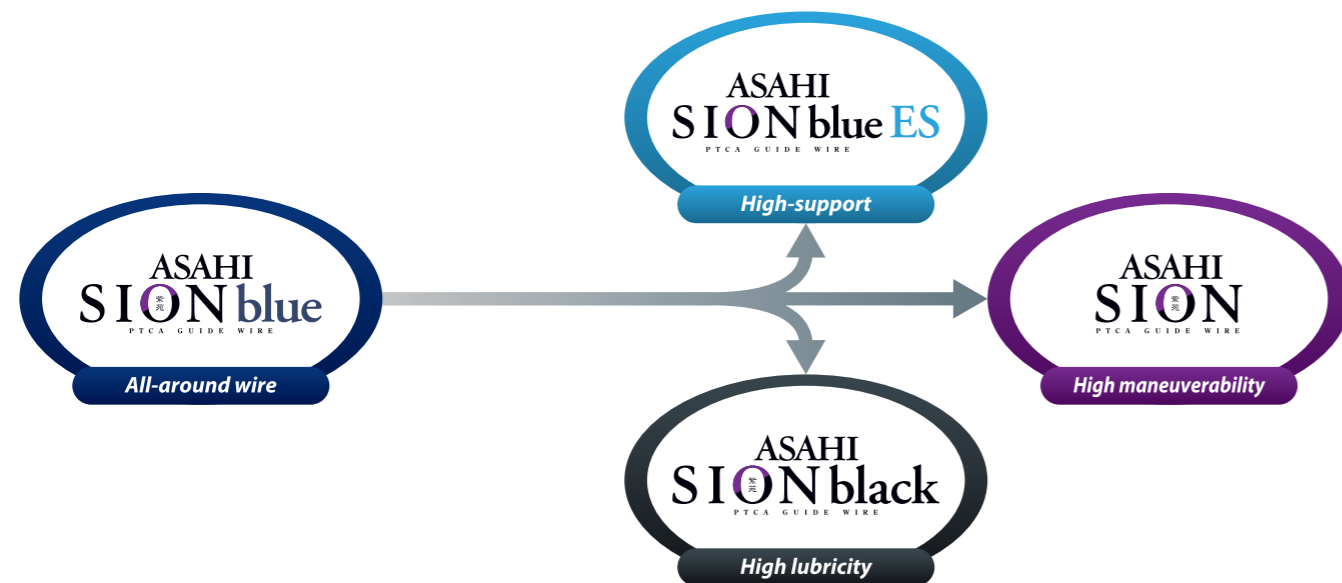
### ASAHI SION black



- Tip load ..... 0.8 gf
- Tip radiopacity ..... 3 cm
- Polymer jacket length ..... 20 cm
- SLIP-COAT® coating ..... 40 cm



Frontline guide wire with a polymer jacket designed to retain flexibility while crossing high resistance stenosis and vessels.



## Support guide wires

### ASAHI SION blue ES



- Tip load ..... 0.5 gf
- Tip radiopacity ..... 3 cm
- SLIP-COAT® coating ..... 40 cm\*

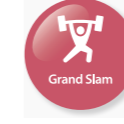


An extra support type wire with SION TECC. A wire that stabilizes the guide catheter for stress-free device delivery. \*Silicone coating up to 2.5mm from the tip for safer procedures.

### Grand Slam

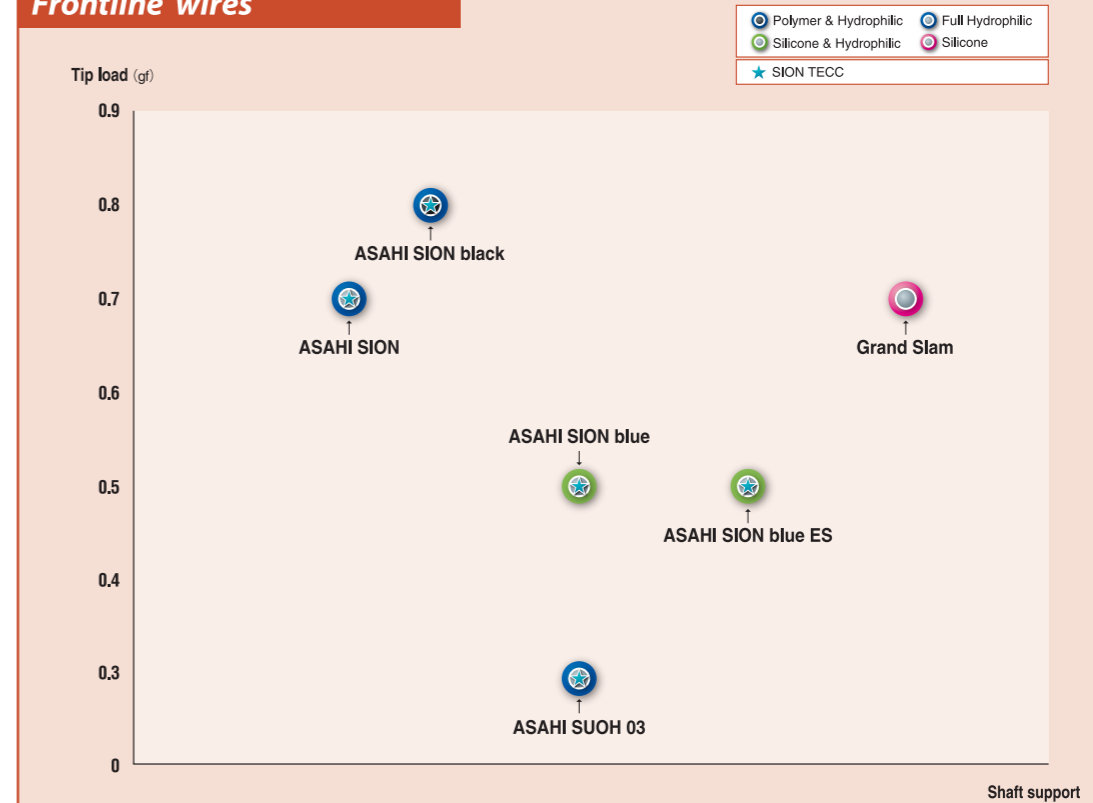


- Tip load ..... 0.7 gf
- Tip radiopacity ..... 4 cm
- Silicone coating over the spring coil



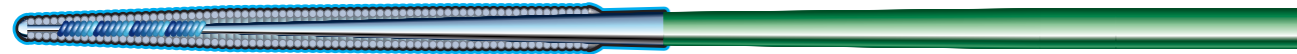
Stiff wire shaft provides extra support for delivery of interventional devices in extreme cases.

## Frontline wires



## Complex and Chronic occlusion guide wires

### Fielder XT-R



- Tip load ..... 0.6 gf
- Tip radiopacity ..... 16 cm
- Polymer jacket length ..... 17 cm
- Tip outer diameter ..... 0.26 mm (0.010 inch)
- SLIP-COAT® coating over the polymer jacket



Guide wire recommended for narrow channel tracking with its low profile, flexible tip, and high lubricity polymer coating.

### Fielder XT-A



- Tip load ..... 1.0 gf
- Tip radiopacity ..... 16 cm
- Polymer jacket length ..... 17 cm
- Tip outer diameter ..... 0.26 mm (0.010 inch)
- SLIP-COAT® coating over the polymer jacket



Guide wire with a higher tip load than Fielder XT and XT-R, facilitating entry into the chronic occluded lesion.

### ULTIMATEbros 3



- Tip load ..... 3.0 gf
- Tip radiopacity ..... 11 cm
- SLIP-COAT® coating over the spring coil until the middle of the shaft / without tip



Long hydrophilic coating maintains high maneuverability, allowing for improved wire manipulation in heavy stenosed lesions. Fine shaping improves vessel selectivity and reduces the risk of false lumen expansion.

### ASAHI Gaia series (First, Second, Third)



- Tip load
  - ASAHI Gaia First ..... 1.7 gf
  - ASAHI Gaia Second ..... 3.5 gf
  - ASAHI Gaia Third ..... 4.5 gf
- Tip radiopacity ..... 15 cm
- Tip outer diameter
  - ASAHI Gaia First ..... 0.26 mm (0.010 inch)
  - ASAHI Gaia Second ..... 0.28 mm (0.011 inch)
  - ASAHI Gaia Third ..... 0.30 mm (0.012 inch)
- SLIP-COAT® coating ..... 40 cm



Guide wire with a high maneuverability in the chronic total occluded lesion, and a tip designed to improve penetrability into the lesion while remaining flexible.

## Complex and Chronic occlusion guide wires

### ASAHI Conquest Pro series / ASAHI Confianza Pro series

9 / 12



- Tip load ..... 9.0 / 12.0 gf
- Tip radiopacity ..... 20 cm
- SLIP-COAT® coating over the spring coil, excluding the tip
- Tip outer diameter ..... 0.23 mm (0.009 inch)



Tapered guide wire for crossing complex lesion with heavy calcification or tough fibrous tissues.

### ASAHI Miracle 12 / ASAHI MIRACLEbros 12

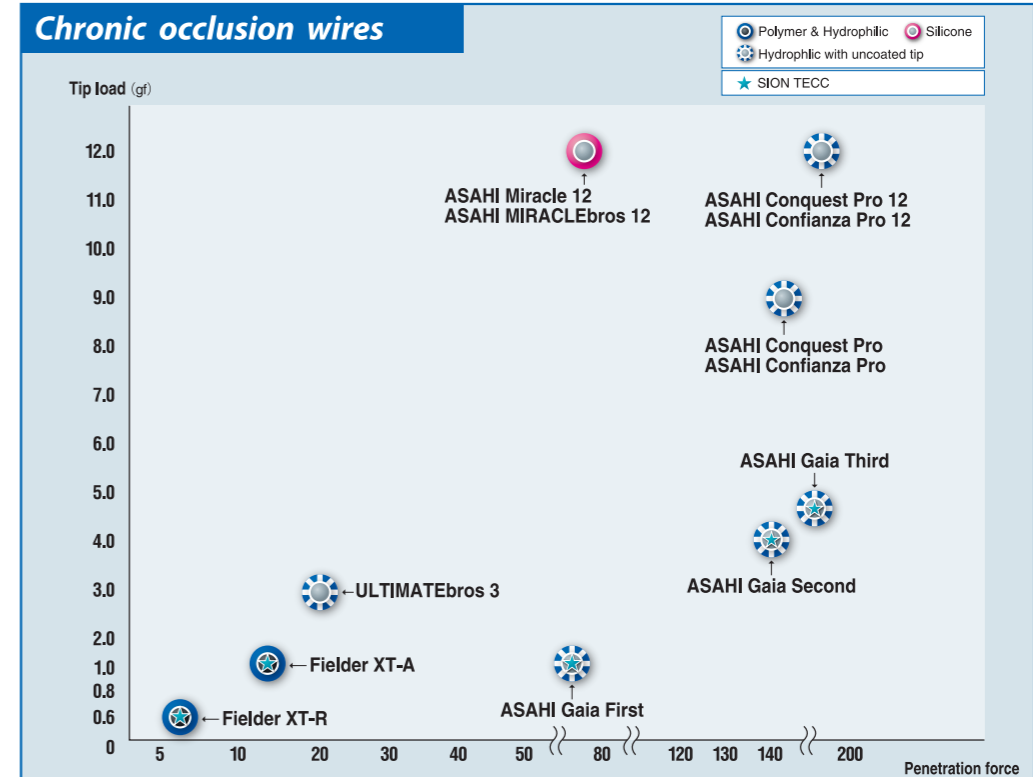


- Tip load ..... 12.0 gf
- Tip radiopacity ..... 11 cm
- Silicone coating over the spring coil



Guide wire with good tactile feed back which maintains torqueability through the occlusion.

### Chronic occlusion wires



**Polymer & Hydrophilic**  
Enhanced lubricity for better crossability of severe stenoses.

**Hydrophilic with uncoated tip**  
Enhance lubricity for easier wire manipulation in lesions.

**Silicone**  
Prevent slippage to gain tactile response for lesion morphology.

**SION TECC**

# Externalization guide wire

## ASAHI RG3



- Tip load ..... 3.0 gf
- Tip radiopacity ..... 3 cm
- SLIP-COAT® coating over the spring coil and until the middle of the shaft
- Shaft diameter ..... 0.26 mm (0.010 inch)
- Guide wire length ..... 330 cm



For guide wire externalization only. Optimal wire strength, hydrophilic coating and 0.26 mm (0.010 inch) shaft provide superior inside-catheter pushability. With the inner wall damage possibility reduced in tortuous vessels as well, the risk of complication is minimized.

# Retrograde guide wire

## ASAHI SUOH 03



- Tip load ..... 0.3 gf
- Tip radiopacity ..... 3 cm
- SLIP-COAT® coating ..... 52 cm

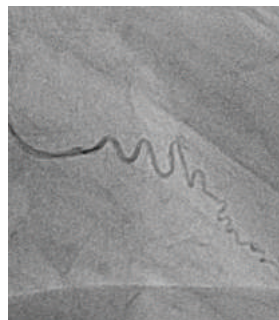
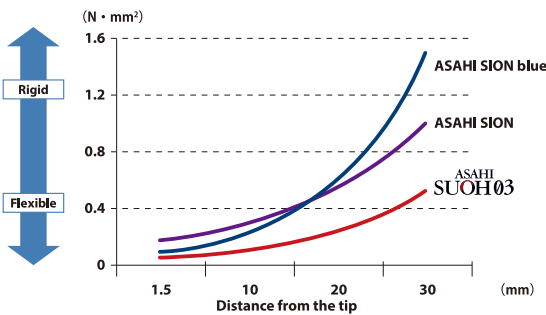


Flexible shaft provides superb trackability and crossability in severe tortuosity. The long radiopaque segment provides good visualization.

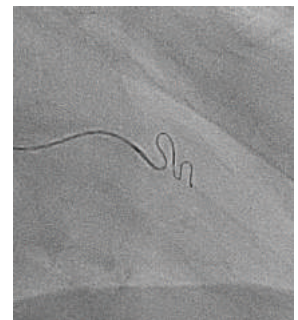


### Tip flexibility

Radiopaque distal 30 mm is the most flexible among ASAHI guide wires.



■ Angiogram by tip injection

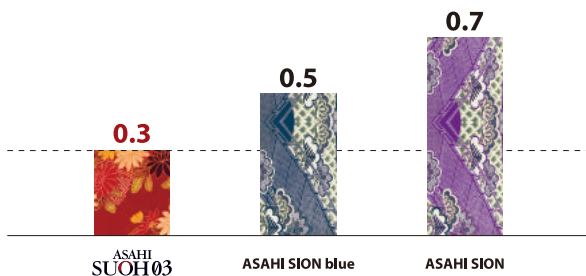


■ SUOH 03 Wiring



### Tip load (gf)

The softest tip among ASAHI guide wires – 0.3 gf.\*



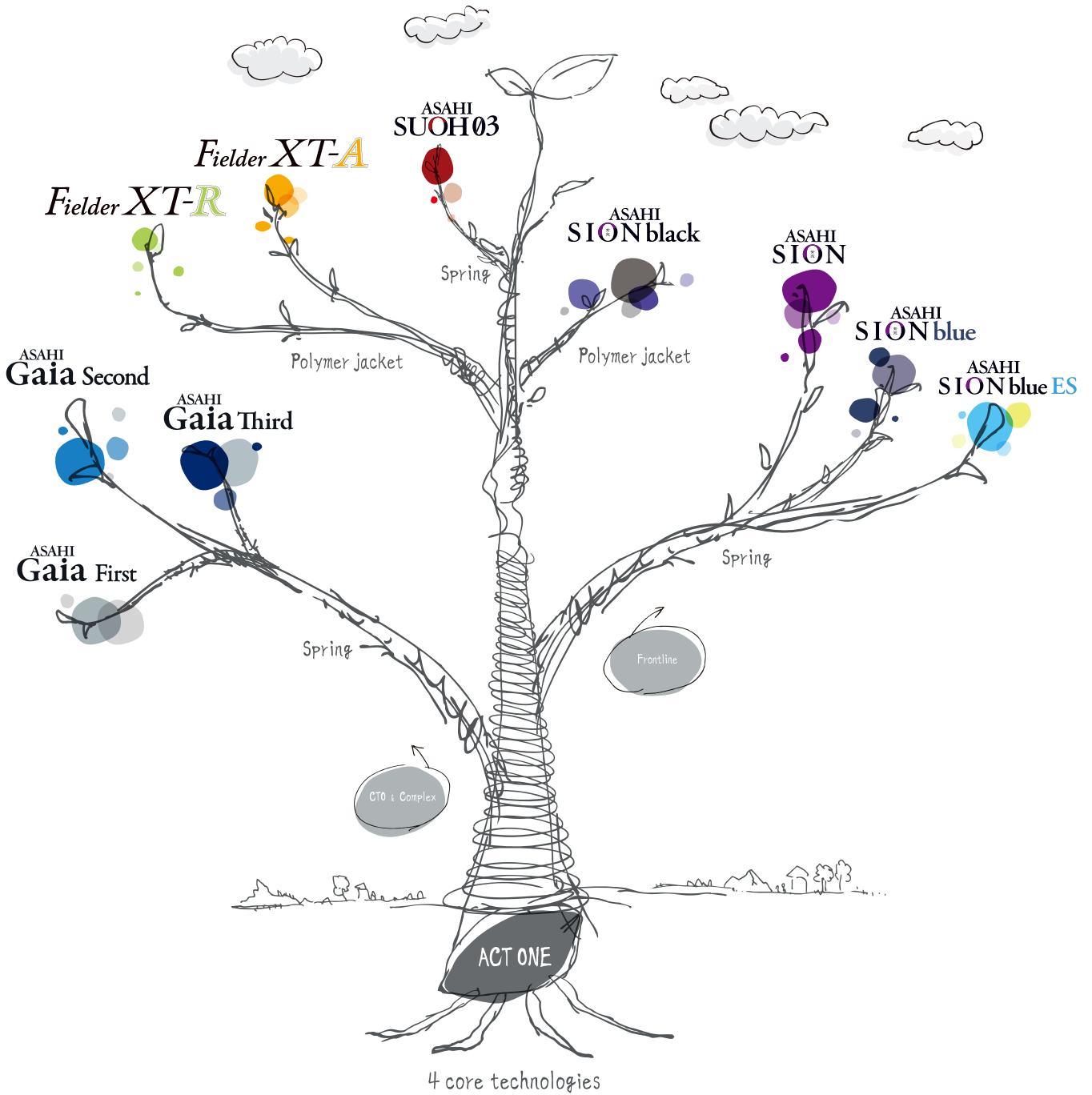
All the data were obtained by company standardized test, which may differ from industry standardized tests. All the data do not guarantee that all devices have exactly the same performance with the samples used for tests.

\*Softest available tip load at 0.3 gf is as of Jan 2017.

ASAHI's unique guide wire technology with Composite Core

# SION TECC

Leading to the NEXT



 ASAHI INTECC

# Ordering information

Product	Catalog No.	Diameter (mm (inch))	Radiopaque segment (cm)	Spring coil length (cm)	Length (cm)	Tip shape
ASAHI SION blue <b>SION TECC</b>	AHW14R004S	0.36 (0.014)	3	20	180	Straight
	AHW14R304S				300	Straight
	AHW14R004J				180	J
	AHW14R304J				300	J
ASAHI SION <b>SION TECC</b>	AHW14R001S	0.36 (0.014)	3	28	180	Straight
	AHW14R301S				300	Straight
	AHW14R001J				180	J
	AHW14R301J				300	J
ASAHI SION black <b>SION TECC</b>	APW14R010S	0.36 (0.014)	3	12	180	Straight
	APW14R310S				300	Straight
	APW14R010J				180	J
	APW14R310J				300	J
ASAHI SION blue ES <b>SION TECC</b>	AHW14R017S	0.36 (0.014)	3	8.5	180	Straight
	AHW14R317S				300	Straight
	AHW14R017J				180	J
	AHW14R317J				300	J
Grand Slam	AG141002	0.36 (0.014)	4	4	180	Straight
	AG141302				300	Straight
	AG141002J				180	J
Fielder XT-R <b>SION TECC</b>	APW14R005S	0.26 / 0.36 (0.010 / 0.014)	16	16	190	Straight
	APW14R305S				300	Straight
Fielder XT-A <b>SION TECC</b>	APW14R009S	0.26 / 0.36 (0.010 / 0.014)	16	16	190	Straight
	APW14R309S				300	Straight
ULTIMATEbros 3	AHW14S003S	0.36 (0.014)	11	11	180	Straight
ASAHI Gaia First <b>SION TECC</b>	AHW14R007P	0.26 / 0.36 (0.010 / 0.014)	15	15	190	Pre-shape
	AHW14R307P				300	Pre-shape
ASAHI Gaia Second <b>SION TECC</b>	AHW14R008P	0.28 / 0.36 (0.011 / 0.014)	15	15	190	Pre-shape
	AHW14R308P				300	Pre-shape
ASAHI Gaia Third <b>SION TECC</b>	AHW14R011P	0.30 / 0.36 (0.012 / 0.014)	15	15	190	Pre-shape
	AHW14R311P				300	Pre-shape
ASAHI Conquest Pro / ASAHI Confianza Pro	AGH143090	0.23 / 0.36 (0.009 / 0.014)	20	20	180	Straight
ASAHI Conquest Pro 12 / ASAHI Confianza Pro 12	AGH143091	0.23 / 0.36 (0.009 / 0.014)	20	20	180	Straight
ASAHI Miracle 12 / ASAHI MIRACLEbros 12	AG14M070	0.36 (0.014)	11	11	180	Straight
ASAHI RG3	AHW10S302S	0.26 (0.010)	3	8	330	Straight
ASAHI SUOH 03 <b>SION TECC</b>	AHW14R013P	0.36 (0.014)	3	19	190	Pre-shape
	AHW14R313P				300	Pre-shape
ASAHI EXTENSION 165cm	AG149001	0.36 (0.014)	—	—	165	—



Not all products and shapes are available in all markets. Please check availability with your sales representative.  
Coated with SLIP-COAT® coating.

© 2017 ASAHI INTECC CO., LTD.  
\*ASAHI\*, \*ACT ONE\*, \*ASAHI SION\*, \*ASAHI Gaia\*, \*Fielder\*, and \*SUOH\* are trademarks or registered trademarks of ASAHI INTECC CO., LTD. in Japan and other countries.

Manufactured by:

Distributed by:



**ASAHI INTECC CO.,LTD.**

3-100 Akatsuki-cho, Seto, Aichi 489-0071 Japan  
TEL:+81-561-48-5551 FAX:+81-561-48-5552

<http://www.asahi-intecc.com>